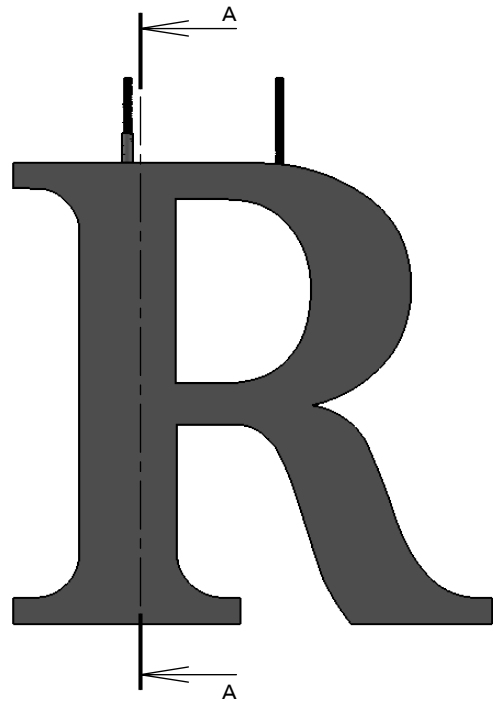
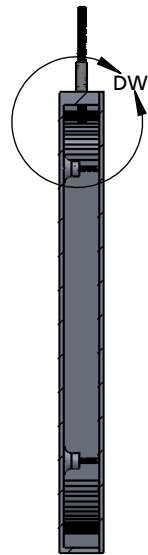


PRODUCT CONSTRUCTION EXAMPLE

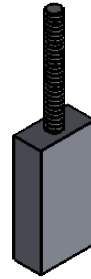


FRONT VIEW II SCALE 1 : 5

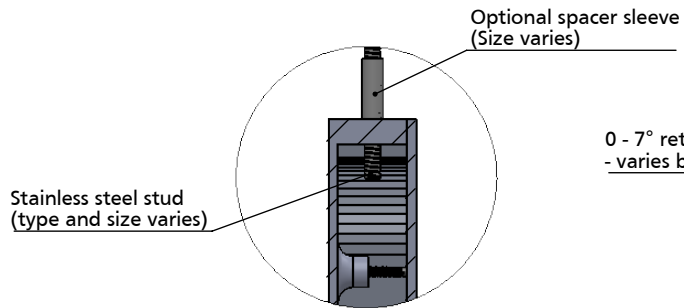
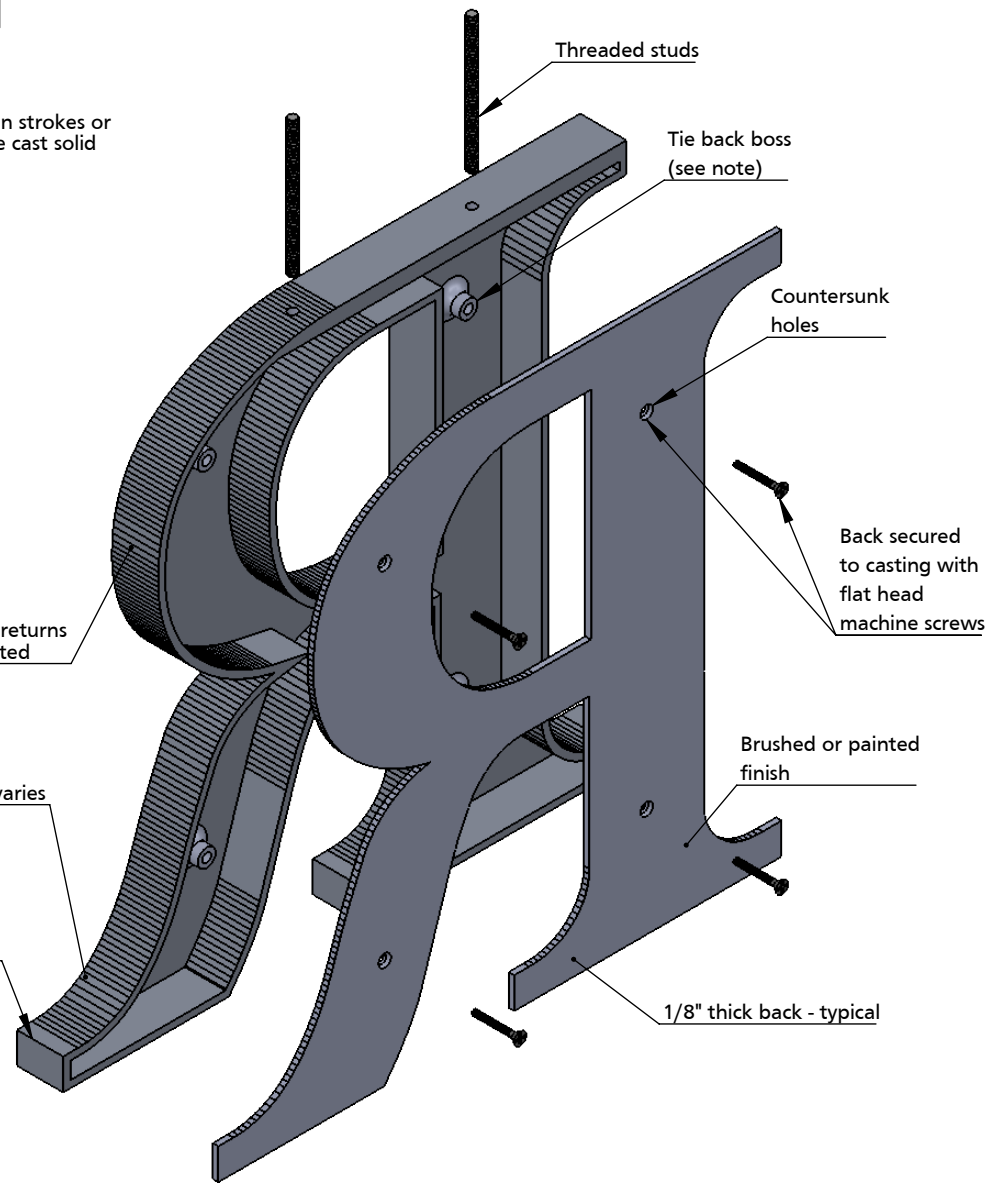


SECTION A-A II SCALE 1 : 5

NOTE: Styles with thin strokes or small letters may be cast solid



Standard returns
Bead blasted



DETAIL DW II SCALE 2 : 5

0 - 7° return draft - thickness/depth
- varies by style and height

NOTES:

- Letters 4" - 24" Minimum 3/8" thick
- Tie back required (not supplied) on letters >8" high
- Typical stud length 3"-4" beyond top of letter
- Round letters (O, C, J, G, Q, S, U) sanded flat on top- optional
- Minimum 2 studs per letter- typical
- 3/8" - 1/2" deep, 4-6" high, 10/24 stainless steel studs
- Over 1/2" deep, or over 6" high, 1/4-20 stainless steel studs- typical
- Standard catalog styles or customer per vector art. Flat faced/round/prismatic profile options. Typical 3/16" - 1/4" wall thickness on hollow back letters/logos.
- Letters or logos, standard or custom



TITLE: CAST METAL TOP STUD MOUNT - THICK BACK			
MATERIAL: ALUMINUM		PRODUCT TYPE: CAST METAL	
DWG NO. CAST120	REV. 03.23.22	SCALE: AS INDICATED	SHEET 1 OF 1