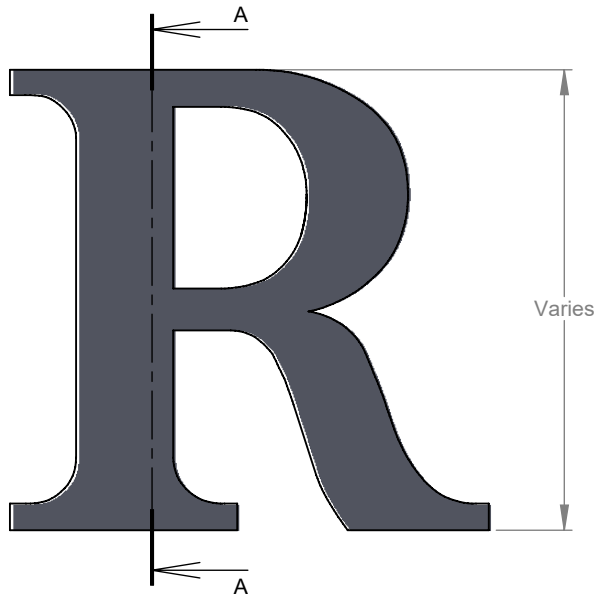
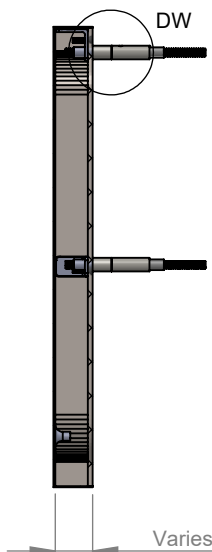


PRODUCT CONSTRUCTION EXAMPLE

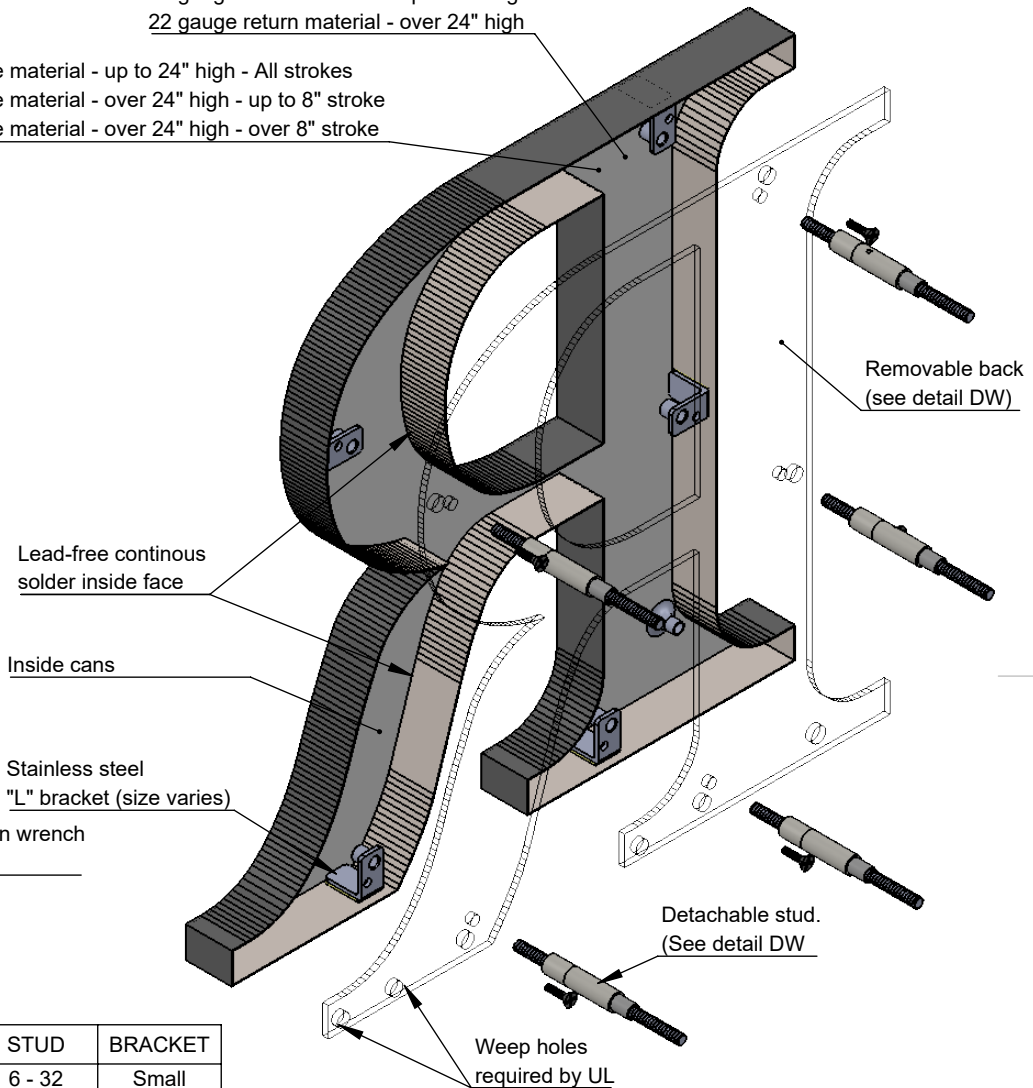


FRONT VIEW II SCALE 1:5



SECTION A-A II SCALE 1:5

- 24 gauge return material - up to 24" high
- 22 gauge return material - over 24" high
- 18 gauge face material - up to 24" high - All strokes
- 18 gauge face material - over 24" high - up to 8" stroke
- 16 gauge face material - over 24" high - over 8" stroke



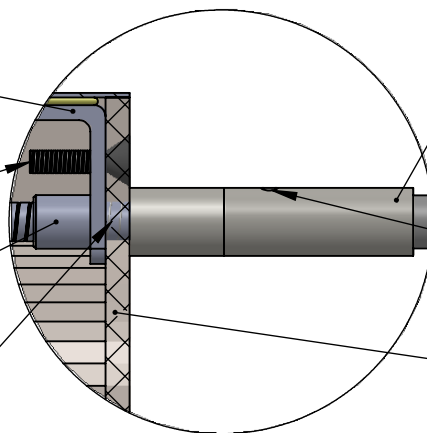
ISOMETRIC BACK VIEW II SCALE 1:3

"L" bracket secured with high resistance epoxy to return (size varies)

Flush back secured with stainless steel screw

Threaded Stud Boss
Size varies by bracket

Stainless steel Mounting Stud
Size varies (see table)



DETAIL DW II SCALE 1 : 1

Clear anodized aluminum detachable stud.

Set screw loosened with Allen wrench (wrench included)

Removable light diffused plastic or stainless steel back.

LETTER SIZE	MIN. DEPTH	STUD	BRACKET
up to 6"	0.6"	6 - 32	Small
over 6" to 24"	1.0"	10 - 24	Medium
over 24"	1.75"	1/4 - 20	Large

Lead-free continuous solder inside face

Inside cans

Stainless steel "L" bracket (size varies)

Removable back (see detail DW)

Detachable stud. (See detail DW)

Weep holes required by UL

BACK OPTIONS

- Light diffused Plastic: 0.187" thick

MATERIAL OPTIONS

- Standard - 304 prefinished stainless steel
- Optional - 316 prefinished stainless steel (more corrosion resistant)
- 304 prefinished stainless with titanium coating



TITLE:

METAL FACE WITH BACK - DETACHABLE STUD MOUNT

MATERIAL:

STAINLESS STEEL

PRODUCT TYPE:

FABRICATED METAL