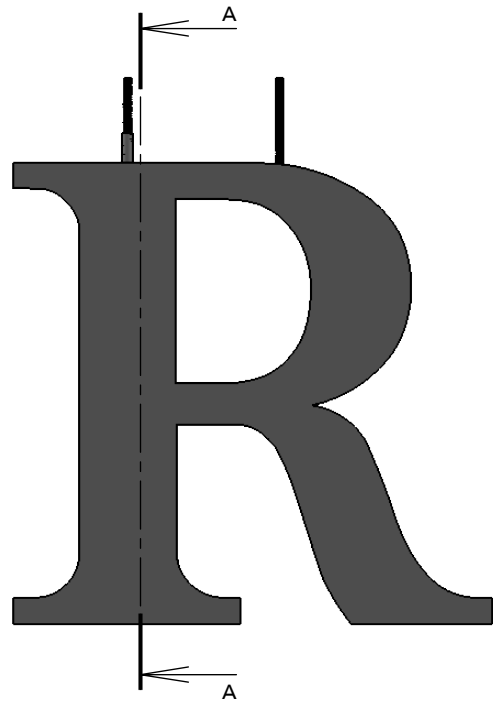
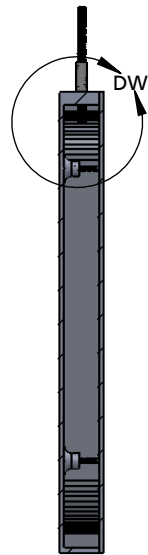


PRODUCT CONSTRUCTION EXAMPLE

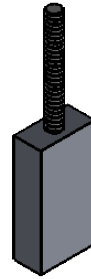


FRONT VIEW II SCALE 1 : 5

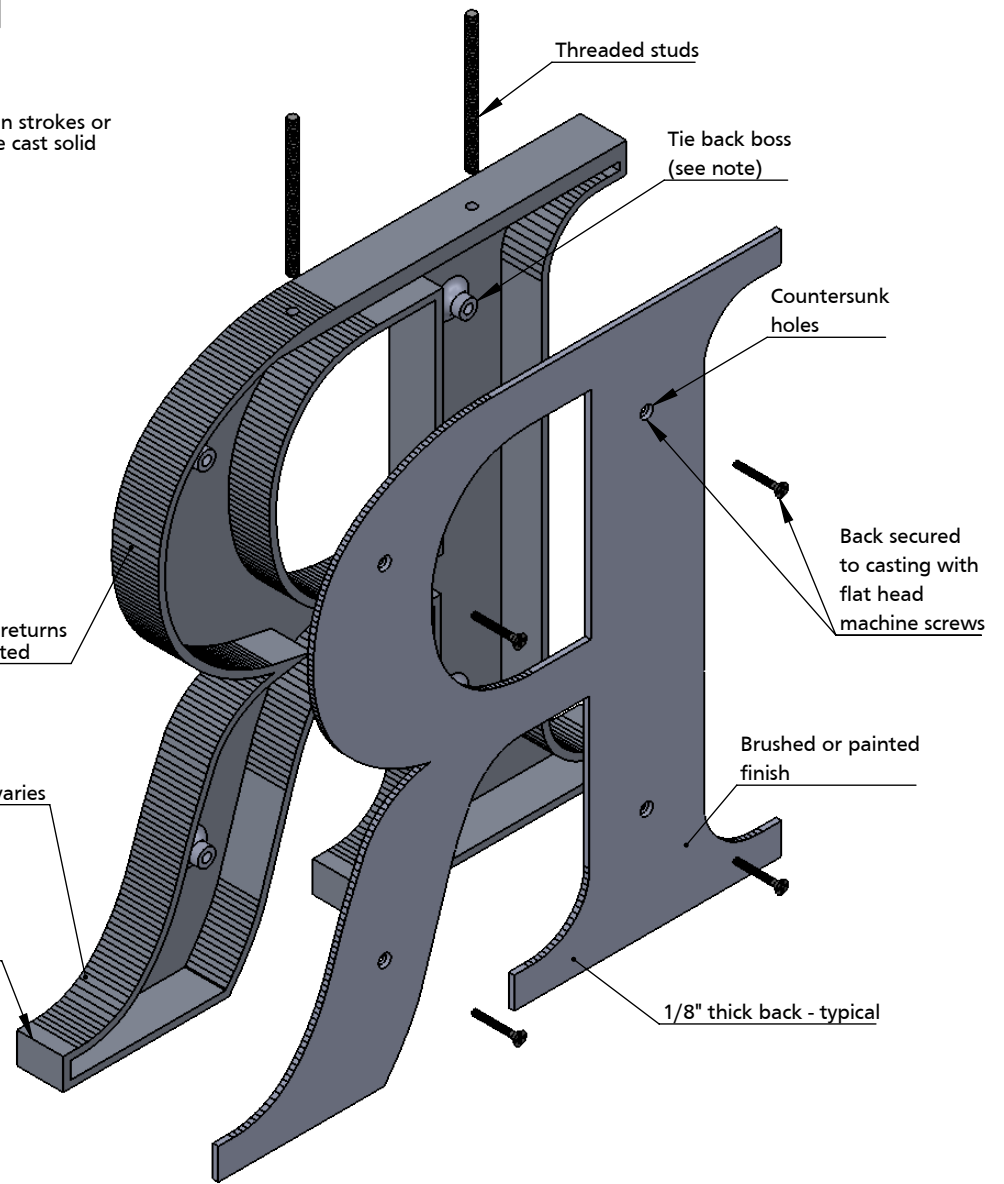


SECTION A-A II SCALE 1 : 5

NOTE: Styles with thin strokes or small letters may be cast solid



Standard returns  
Bead blasted



Threaded studs

Tie back boss  
(see note)

Countersunk  
holes

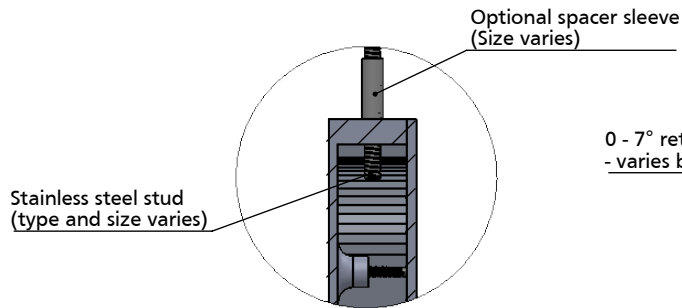
Back secured  
to casting with  
flat head  
machine screws

Brushed or painted  
finish

1/8" thick back - typical

Letter finish varies

0 - 7° return draft - thickness/depth  
- varies by style and height



DETAIL DW II SCALE 2 : 5

Optional spacer sleeve  
(Size varies)

Stainless steel stud  
(type and size varies)

NOTES:

- Letters 4" - 24" Minimum 3/8" thick
- Tie back required (not supplied) on letters >8" high
- Typical stud length 3"-4" beyond top of letter
- Round letters (O, C, J, G, Q, S, U) sanded flat on top- optional
- Minimum 2 studs per letter- typical
- 3/8" - 1/2" deep, 4-6" high, 10/24 stainless steel studs
- Over 1/2" deep, or over 6" high, 1/4-20 stainless steel studs- typical
- Standard catalog styles or customer per vector art. Flat faced/round/prismatic profile options. Typical 3/16" - 1/4" wall thickness on hollow back letters/logos.
- Letters or logos, standard or custom



TITLE: <b>CAST METAL TOP STUD MOUNT - THICK BACK</b>			
MATERIAL: <b>ALUMINUM</b>		PRODUCT TYPE: <b>CAST METAL</b>	
DWG NO. CAST120	REV. 7/26/2017	SCALE: AS INDICATED	SHEET 1 OF 1